



**FOR IMMEDIATE RELEASE**  
**IMTS 2008 BOOTH D-4208**

CONTACT: John Meyer  
(847) 640-1595  
[john.meyer@siemens.com](mailto:john.meyer@siemens.com)

## **SIEMENS PRESENTS NEW INNOVATIONS THAT ENHANCE MACHINE TOOL PRODUCTIVITY**

**CHICAGO**, IMTS, Sept. 8, 2008 — At this year's International Manufacturing Technology Show (IMTS) in Chicago, Siemens will introduce new solutions and services for machine tool manufacturers and end-users. Under the theme, "Productivity in motion", the presentation will focus on turnkey solutions for the job shop, aerospace, automotive and medical manufacturing industries.

For machine manufacturers and end-users, Siemens will exhibit the newest innovations in CNC (computer numerical control), motor and drive technology as well as new value-added services ranging from mechatronics support and machine tool retrofit to product lifecycle management and innovative solutions for CNC training.

### **SOLUTIONS FOR THE JOB SHOP**

For the job shop, new versions of the popular ShopMill and ShopTurn software packages allow users to achieve higher productivity and simplicity, as well as greater speed. By featuring easy, step-by-step, on-screen programming, job shops are enabled to quickly respond to customer demands by reducing programming, tooling and production times.

Together with the SINUMERIK 802D solution line CNC, job shops are given the edge over the competition. The 802D sl is an operator panel-based control system that combines the numerical control (NC), the programmable logic controller (PLC) and the human machine interface (HMI) in a single unit. It has the capability of five-axis machining (two of which may be spindles) and is the ideal solution for the low- and medium-range milling and turning machine markets.

To demonstrate job shop applications, Fryer Machine Systems will display its MC-10 milling machine with the new SINUMERIK 840D solution line, ShopMill as well as Siemens motors and drives in the Siemens booth. It is an ideal machine tool for job shop environments.

-more-

End-users will benefit from increased efficiency and productivity; convenient operation and programming through advanced programming support such as Siemens' ShopMill and ShopTurn; and perfect handling through the use of compact flash (CF) cards for the storage, transmission and processing of part programs. Additionally, PROFINET, the standard industrial Ethernet, and PROFIBUS protocols are used for machine tool communication.

### **SOLUTIONS FOR AEROSPACE**

For the aerospace market, the new SINUMERIK 840D solution line is the latest in CNC technology that increases performance and user productivity. The SINUMERIK 840D sl is a universal and flexible CNC system featuring the innovative SINAMICS S120 drives that can be used for up to 31 axes. It is a distributed, scalable, open and inter-connecting system offering a wide range of specialized functions for milling, drilling, turning, grinding and handling technologies.

The 840D offers users innovative features that increase productivity on the manufacturing floor, especially the challenging segments of high-speed and five-axis aerospace machining.

### **SOLUTIONS FOR AUTOMOTIVE**

In the automotive industry, Siemens continues to solidify its position with the TRANSLINE System Solution, the solution for automotive powertrain. This system integrates diverse metal cutting technologies such as milling, drilling, turning and grinding, and the assembly of powertrain parts, under a common system architecture. Since its implementation in 1993 at the Mercedes Benz NVM engine plant in Bad Canstatt, Germany, TRANSLINE has grown to become a recognized standard of excellence in the United States among both OEMs and end-users.

Based on the new SINUMERIK 840D solution line and SIMATIC PLC, the TRANSLINE solution line transforms the company's concept of "productivity in motion" into a real world application for total factory automation. By specifying TRANSLINE, machine tool users benefit from faster start-up times, better equipment serviceability and increased productivity.

## **SOLUTIONS FOR MANUFACTURING EXCELLENCE**

Condition Monitoring, Machine Development and Manufacturing IT are three value-added services that are continuing their introduction to the U.S. machine tool market.

Condition Monitoring, provided by Siemens' ePS Network Services, is an internet-based service from Siemens that supports maintenance processes while simultaneously forming a platform for cross-company service and support between OEMs and machine operators. ePS services can be configured on the ePS servers over secure internet connections from anywhere in the world via a standard PC, an internet connection and web browser.

Machine Development (Mechatronics Support) allows OEMs to design their machines in a cooperative partnership with Siemens experts — from the machine's concept all the way through to completion. Such cooperation enables machine tool builders to work very closely with Siemens as their expert and supplier of control and drives technology. Working together with the OEM's engineers, Siemens will develop innovative ideas and end-user-specific machine concepts that are tailored exactly to their needs. Each solution comes equipped with state-of-the-art CNC technology and the ultimate in functionality.

Manufacturing IT solutions from Siemens provide software tools for fast, easy integration of machines in a production network while ensuring that production planning, scheduling and execution is always problem-free and based on the very latest data.

An entire line of powerful software modules for production machines ensure optimum integration of the machines in the IT-environment and support a wide range of different functionalities including:

- Production data management (MDA / PMT / PDA)
- Numerical control program management (DNC)
- Tool management (TDI)
- Maintenance management (TPM)
- Service management (RCS)
- Computer interfacing (RPC)

## **SOLUTIONS FOR CNC TRAINING**

SinuTrain, the Siemens package of CNC training software on CD-ROM, is designed to run on Windows XP operating systems. It is the optimal solution for machine tool control-identical simulation training. Due to overwhelming response, Siemens is offering the complete SinuTrain package of Siemens SINUMERIK CNC versions 802D/810D/840D/840Di, including the training keyboard, for only \$1200 through Sept. 30, 2009. Additionally, other SinuTrain program components are being offered at discounted pricing until Sept. 30, 2009, to suit the particular needs of any training operation.

SinuTrain provides mill and lathe operators a high degree of practical hands-on experience, prior to using the CNCs on their actual machines. With SinuTrain, actual NC programs are developed and simulated, using a direct connection to the company's CAD systems to further speed the program generation protocol. In this way, operators not only learn the control language commands, they also visualize part programs on a PC screen that are identical to the actual machine screen. As a further benefit, programs generated through SinuTrain on the PC software can then be utilized on the machines.

Other exhibits on display in the Siemens booth include the new 1FT7 series of synchronous servomotors, integrated motor spindles, linear motors and direct-drive torque motors that contribute to the increase in machine performance. The exhibition will also focus on retrofit, field service, customer service, spare parts and repair, all of which support the machine tool manufacturer and end-user.

###

Please forward all inquiries to:

Siemens Energy & Automation, Inc.  
Machine Tool Business  
390 Kent Avenue  
Elk Grove Village, IL 60007  
Attn: Marketing/Communications

For product information and inquiries, call (800) 879-8079 ext. Marketing Communications or e-mail [SiemensMTBUMarCom.sea@siemens.com](mailto:SiemensMTBUMarCom.sea@siemens.com)

### **About Siemens**

Siemens Energy & Automation, Inc. is one of Siemens' operating companies in the U.S. Headquartered in the Atlanta suburb of Alpharetta, Ga., Siemens Energy & Automation, Inc. manufactures and markets one of the world's broadest ranges of electrical and electronic products, systems and services to industrial and construction market customers. Its technologies range from circuit protection and energy management systems to process control, industrial software and totally integrated automation solutions. The company also has expertise in systems integration, technical services and turnkey industrial systems. For more information: [www.sea.siemens.com](http://www.sea.siemens.com).

Siemens AG (NYSE: SI) is a global powerhouse in electrical engineering and electronics, focusing on the three key sectors of healthcare, industry and energy. Founded 160 years ago in Germany, Siemens AG reported sales of \$96.6 billion in fiscal year 2007 (ended September 30). Siemens today employs more than 470,000 people in some 190 countries. In the United States alone, Siemens had sales of over \$25 billion (including export sales), fueled largely by infrastructure projects and innovative solutions in the industry areas of medical, automation and control, power, transportation and lighting. Headquartered in New York City, Siemens in the U.S. employs nearly 72,000 people in all 50 states and Puerto Rico. The U.S. is also home to the global headquarters of nine of Siemens' worldwide businesses. For more information on Siemens in the United States, go to [www.usa.siemens.com](http://www.usa.siemens.com).



The SINUMERIK 802D solution line CNC is a new panel-based control system that combines the numerical control (NC), the PLC and the HMI in a single unit. The 802D sl has the capability of five-axis machining (two of which may be spindles) and is the ideal solution for the low- and medium-range milling and turning machine markets.



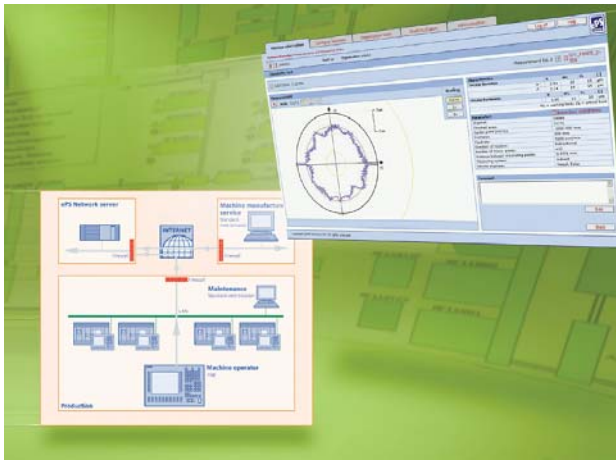
Siemens' new SINUMERIK 840D solution line is a universal and flexible CNC system featuring the innovative SINAMICS S120 drives design. It is available in both panel- and PC-based versions and is ideal for applications using the most diverse technologies. The drives communications system called "Drive CLiQ" provides improved diagnostics and fast drive recognition via the electronic type plate.



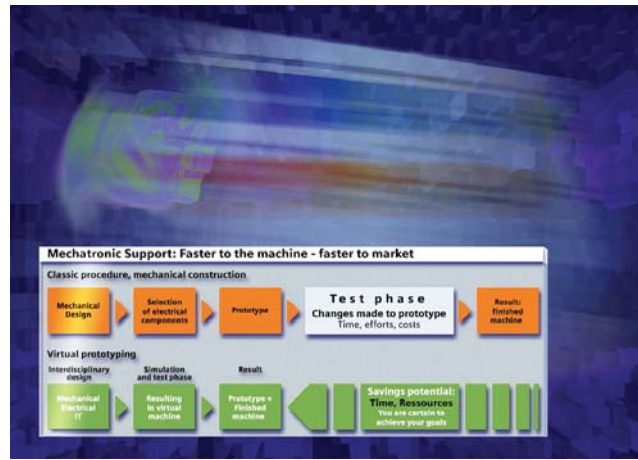
For the job shop, new versions of ShopMill and ShopTurn software packages allow users to achieve higher productivity, simplicity and greater speed. By featuring easy, step-by-step, on-screen programming, job shops are enabled to quickly respond to customer demands by drastically reducing programming, tooling and production times.



SinuTrain for the job shop is the ideal solution for control-identical CNC training software on CD-ROM. Through Sept. 30, 2009, Siemens is offering the complete SinuTrain package of Siemens SINUMERIK CNC versions 802D/810D/840D/840Di, including the training keyboard, for only \$1200.



Machine tool Condition Monitoring, provided by Siemens' ePS network services, strives to increase the productivity and availability of machines and to optimize service and maintenance processes all over the world. Services are provided via an Internet-based platform to support multi-company service and support processes and to ensure secured communication.



Machine Development (Mechatronics Support) allows the OEM to design their machines together with Siemens experts—from the machine's concept all the way through to completion. Such cooperation enables machine tool builders to work very closely with Siemens as their expert and supplier of controls and drives.

The photos in this press release are all available upon request.

Please contact Siemens via e-mail [SiemensMTBUMarCom.sea@siemens.com](mailto:SiemensMTBUMarCom.sea@siemens.com) or call +1 847 640 1595